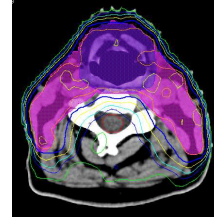


Hands-on-course:

Intensity Modulated Radiation Therapy Treatment Planning (IMRT TP)

02-NOV-2009 – 06-NOV-2009



PROGRAMME IMRT TP HOC 2009

Monday 02-NOV-2009:

- 09:00-09:30: **Introduction of the course** speaker: [Iain Bruinvis](#)
- Aims of the course** speaker: [Jelle Scheurleer](#)
- 09:30-10:30: **Inverse planning: optimisation, ...** speaker: [Eugène Damen](#)
- 10.30-11:00: Coffee break
- 11.00-12:00: **IMRT: opportunities, challenges ...** speaker: [Roel Zinkstok](#)
- 12:00-13:00: **Delineation of targets and OARs** speaker: [Roel Steenbakkers](#)
- 13:00-14:00: Lunch break
- 14.00-17.00: **Hands-on: Prostate patient case** guidance: [Emmy Lamers](#),
[Jelle Scheurleer](#), [Ingrid Kuijper](#), [TPS companies](#)
- Coffee break is included in above period
- 17:00-19:00: Drinks and snacks

Tuesday 03-NOV-2009:

- 09.00-10.30: **Discussion Prostate patient case** moderators: [Willemijn Kolff](#),
[Emmy Lamers](#), [Iain Bruinvis](#)
- 10.30-11.00: Coffee break
- 11.00-12.00: **IMRT treatment planning parameters** speaker: [Uulke v.d. Heide](#)
- 12.00-13.00: Lunch break
- 13.00-17.00: **Hands-on: Lung patient case** guidance: [Emmy Lamers](#),
[Jelle Scheurleer](#), [Ingrid Kuijper](#), [TPS companies](#)
- Coffee break is included in above period

PROGRAMME IMRT TP HOC 2009

Wednesday 04-NOV-2009:

- 09.00-10.30: **Discussion Lung patient case** moderators: Niels Haasbeek
Emmy Lamers, Iain Bruinvis
- 10.30-11.00: Coffee break
- 11.00-12.00: **New developments: VMAT** speaker: Jochem Wolthaus
- 12.00-13.00: Lunch break
- 13.00-17.00: **Hands on: Breast patient case** guidance: Emmy Lamers,
Jelle Scheurleer, Ingrid Kuijper, TPS companies

Coffee break is included in above period

Thursday 05-NOV-2009:

- 09.00-10.30: **Discussion Breast patient case** moderators: Nina Bijker
Emmy Lamers, Iain Bruinvis
- 10.30-11.00: Coffee break
- 11.00-12.00: **IMRT for head and neck cancer: ...** speaker: Emmy Lamers
- 12.00-13.00: Lunch break
- 13.00-17.00: **Hands on: Head & Neck patient case** guidance: Emmy Lamers,
Jelle Scheurleer, Ingrid Kuijper, TPS companies

Coffee break is included in above period

Friday 06-NOV-2009:

- 09.00-10.30: **Discussion Head & Neck patient case** moderators: Ruud Wiggeraad
Emmy Lamers, Iain Bruinvis
- 10.30-11.00: Coffee break
- 11.00-12.00 **QA of IMRT planning and delivery** speaker: Ben Mijnheer
- 12.00-12:45 **Summary of the course** speakers: Iain Bruinvis,
Jelle Scheurleer
- 12.45-13:30 Lunch